

### Outstanding Performance, Unequaled Versatility

TRX Series loudspeakers use advanced technology and application-driven engineering to bring live sound closer to the ultimate reference point: reality. Cutting edge driver technology and unique innovations such as our Complex Conic horns deliver natural sounding music and intelligible speech.

Versatile enclosure designs, combined with a wide range of mounting options and associated hardware, provide unrestricted flexibility for both portable and installed applications. Wherever audiences and operators demand superior performance and ease of use, TRX Series loudspeakers are the choice for unequalled value.

#### Applications

- Virtually any application where size is critical and high output and outstanding sonic performance are required.
- Ideal for many side and front fill applications; mount inconspicuously on walls and ceilings, stage lips, under and over balconies, etc.
- Foreground music systems in shopping malls, retail stores, offices, etc.

### Advanced Complex Conic Horn Design



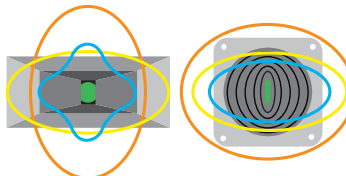
Designed around the spherical expansion of the acoustic pressure wave, Complex Conic horns provide constant beamwidth/directivity without the problems of conventional rectangular horns. These unique waveguides eliminate low frequency "pattern flip"; have no corners to cause high frequency "feathering" and the resulting pattern distortion.

With extended pattern bandwidth, lower distortion and minimal coloration, Complex Conic horns work better and sound far more natural than ordinary horns.

Nominal Coverage Patterns  
(90° by 40°, for example)



Actual patterns clearly show superior pattern control of Complex Conic Horns



Frequency Bar - low frequencies (red) to high frequencies (blue)



## TRX Series

### TRX61

#### 6 1/2" Woofer + 1" HF 2-Way Complex Conic Loudspeaker System



#### • Miniaturized Design

Outstanding, full-range 80 Hz to 20 kHz performance in an extremely compact, space-saving design.

#### • Exclusive Complex Conic Design

Complex Conic horns provide superior pattern control with low distortion.

#### • Wide-Angle 150° by 60° Coverage

Complex Conic horn provides smooth 150° by 60° coverage, may be rotated 90° within cabinet.

#### • 1" Extended Range Titanium HF Driver

Provides smooth, low distortion high frequency performance to 20 kHz and beyond.

#### • Heavy-Duty 6.5" Woofer

With treated fiber cone easily handles 120 Watts of program power.

#### • Built-in Crossover

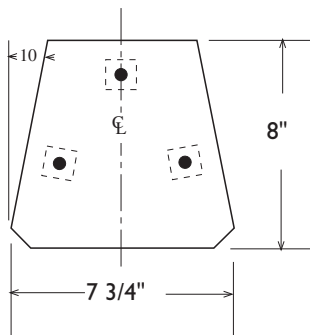
Eliminates need for a separate electronic crossover and bi-amplification.

## TECHNICAL INFORMATION

<b>Sensitivity:</b>	90 dB (1W/1m) @ 500 Hz	<b>Enclosure:</b>	Hardwood, perforated metal grille
<b>Maximum SPL:</b>	111 dB program, 114 dB Peak	<b>Connectors:</b>	Screw terminals or Neutrik 4-pin connectors
<b>Dispersion:</b>	150° H by 60° V*	<b>Finish Options:</b>	Black or white paint Custom colors Natural (unfinished) Weather resistant
<b>Frequency Response:</b>	80 Hz to 18 kHz	<b>Hardware Options:</b>	12-point univ. mtg. hdw. Omnimount Series 30 nut-plate U-bracket Tripod socket
<b>HF Driver:</b>	1" SSD102-8 Titanium driver, 15 W RMS, 30 W program	<b>Dimensions:</b>	15 1/2" H x 7 3/4" W x 8" D (39.4 cm x 19.7 cm x 20.3cm)
<b>LF Driver:</b>	6.5" model SSL6.5-6 woofer, 1" VC, treated fiber cone; 60 Watts RMS, 120 Watts program	<b>Net Weight:</b>	13 Lbs (5.9 Kg) net
<b>Crossover Point:</b>	2.8 kHz		
<b>Power Rating:</b>	120 Watts program at 8 Ohms		

**Note:** Complex Conic horns may be rotated 90 degrees within the enclosure.

## DIMENSIONAL INFORMATION



UMH (Universal Mounting Hardware) attachment points are standard on all fixed installation models. The points have Metric M6 threads and are positioned 1 3/4" from the edges unless otherwise indicated. A nut plate for Omnimount Series 30 mounting hardware may be substituted for the UMH points; can be either top, bottom or side mounted. U-bracket attachment points are a third option.

Portable models are normally supplied with a tripod socket and no attachment points. The enclosure is shown without its metal grille. For more detailed dimensional information, please refer to the 2D and 3D drawing files on our website, [www.renkus-heinz.com](http://www.renkus-heinz.com).

