



# VLX3

versatile powerful compact



**VERSYS**

TOURING LINE ARRAY SYSTEMS



## Concentrated Power, Pin-Point Control and Unmatched Flexibility for Exceptional Performance

The next generation of touring loudspeaker technology is here. The VerSys VLX3 line array is the culmination of years of research and developmental partnerships with some of the world's most renowned live sound engineers.

Advanced acoustical design, innovative rigging hardware and practical industrial design make the VerSys VLX3 an ideal choice for anyone considering an investment in a large format line array system.

## VERSATILE

Whether you're providing sound for large outdoor festivals or corporate events in low ceiling ballrooms the VerSys VLX3 is designed to address all of today's sound company needs. The VerSys VLX3 is lightweight and easy to manage and is useable in small ground stack arrays all the way up to 20 tall flown rigs. The modern hardware design provides more pick up and array curvature options than traditional large format line arrays.

Enclosures can be ordered with 60, 90 or 120 degree horizontal patterns offering greater flexibility to deploy the best system for the job. As an added bonus VerSys VLX3 line arrays can be update at a later date to the self-powered RHAON enabled VL3 version.



"The Renkus-Heinz line array is very compact yet provides all the output necessary for large venues. It is also a very Hi-Fi system. I enjoyed working with it a great deal."

**Dirk Durham**  
FOH engineer "Toby Keith"

## POWERFUL

Capable of in excess of 133 dB SPL and weighing in at around 190 lbs, the VerSys VLX3 has been road tested thoroughly. From the **Independence Festival** at the USC Coliseum to "proof of output potential" testing with **Toby Francis** during **Guns'N'Roses** rehearsals the VerSys line arrays have proven over and over that they are up to the task.

A three way line array system comprised of dual 1000 Watt 12" Neodymium woofers and dual CDT1.5TN co-entrant devices the VerSys VLX3 provides all the output necessary for the most demanding productions.



"Staind is a band that is heavy on guitar and vocals and as such I need a PA that can deliver the edge required for multiple guitars while still maintaining a smooth vocal clarity. The VerSys VLX3 did all that and did so with plenty of headroom in a large outdoor environment. I would use this PA again in a heartbeat."

**Jeff Gilmer**  
FOH Engineer "Staind"

## COMPACT

The cost of trucking has become the single largest expense to a major tour and as such many acts are trying to trim the truck count on their traveling productions.

Smaller than all of the other large format line arrays the VerSys VLX3 was designed in cooperation with international touring system techs to ensure the VerSys VLX3's dimensions provided the ideal truck pack.

Whether its a 96" or 102" trailers VerSys VLX3's travel more efficiently than any other large format line array system.



"The VerSys VLX3 is by far my favorite PA. I used them all and this one sounds better, travels better, rigs better and does all this while still taking up less space than any other large format line array I have ever used."

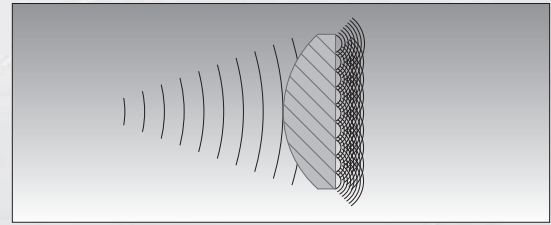
**Toby Francis**  
FOH Engineer - "Mars Volta",  
"Velvet Revolver", "ZZ Top"

## THE ISOPHASIC PLANE WAVE GENERATOR

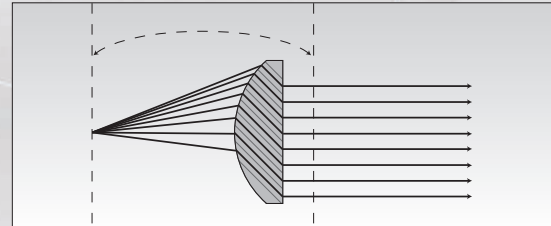
Every line array needs to generate a planar wavefront to minimize interference between adjacent enclosures. A key requirement is equalizing the path length from the compression driver diaphragm (a spherical section) to the linear waveguide mouth. Most path length equalizing methods, such as reflectors and obstacle arrays, are effective over a relatively narrow range of frequencies.

The Renkus-Heinz Isophasic Plane Wave Generator has a significant advantage over these other techniques. Higher frequencies with shorter wavelengths pass through the device as “rays.” At lower frequencies with longer wavelengths, the refractor lens functions as a closely spaced array of diffraction slots. The combination generates planar wavefronts over a wide operating band, from the higher octaves all the way to the midrange.

This design takes advantage of the wideband output of the CoEntrant Transducer to deliver true line array performance without limitations.



Slots are  $<1/2$  a wavelength apart      Wavefront is planar

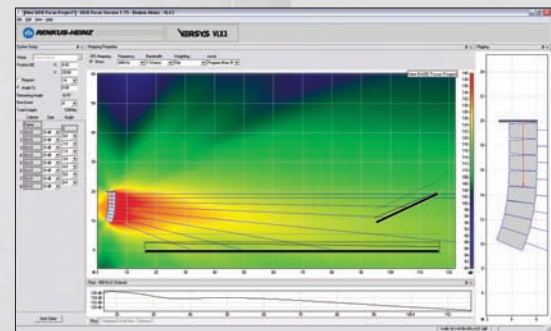


Path lengths are equal      Wavefront is planar

## EASE Focus - ARRAY AIMING SOFTWARE

Line arrays are powerful, accurate — and complicated. You can't just point a straight line array at the middle of the audience and expect even coverage from the front to the rear. To get the desired result, you have to hang the array at the proper height, aim it accurately and curve it precisely. The possibilities are almost endless. How many cabinets will be needed to obtain the desired coverage and SPL levels? Which array configuration will provide the best coverage and performance: a straight line, a constant or progressively curved array, or a “J” shape? What aiming angle will work best? Most importantly, who has the time to find the right answers to all these questions?

With Renkus-Heinz EASE Focus, you do. EASE Focus eliminates guesswork and time-wasting trial-and-error from the line array design and installation process. EASE Focus performs a comprehensive set of simulations and performance prediction calculations while concealing them behind an intuitive graphical user interface. You simply draw a section view of your audience area, then adjust all the critical parameters — number of modules, trim height, aiming angle and curvature. EASE Focus instantly shows you the results of your changes.



EASE Focus shows you all critical line array parameters, and instantly updates its predictions

## HARDWARE THAT'S READY TO WORK

VerSys VLX3 is much more than a loudspeaker. It's a complete, integrated system that has been designed for the road from the inside out to require minimum setup time and deliver maximum versatility. Straight, curved and “J” arrays are easy to assemble and fly. The optional VerSys dolly easily transports up to four prestacked modules. Setup couldn't be easier; just roll them off the truck on their dolly, position them and turn them on. VerSys hardware suspends up to 16 cabinets with metal-to-metal reliability. Splay angles are easily set using 5/8 inch thick metal tie-bars and quick-disconnect pins. Pick-up point locations and enclosure angle settings are provided in advance by AimWare, taking the guesswork out of setup.

The heavy-duty fly bar attaches easily to the array with the quick-disconnect pins while providing a wide range of pickup points and aiming angles. It safely supports up to 16 cabinets.

### Tough & Stylish Finish Options

The standard VerSys VLX3 finish is black paint. Scuff-resistant black TuffTex is an option that can help your system retain its good looks and value while reducing maintenance costs. White and custom color paint finishes are also available.



**VLX3****MAXIMUM SPL**

Highs: 133 dB continuous, 139 dB peak

Mids: 130 dB continuous, 136 dB peak

Lows: 130 dB continuous, 136 dB peak

**FREQUENCY RESPONSE:** 45 Hz to 18 kHz

**MID/HF DRIVERS:** Two CDT-1.5TN CoEntrant drivers with 6.5" mids, 250 W RMS each and two 2.5" HF drivers, 80 W RMS each

**LF DRIVERS:** Two 12" model SSL12-13 woofers with Neodymium magnets; 500 W RMS @ 8 Ohms; 1000 W pgm each

**DISPERSION:** 90° Horizontal dispersion; Vertical dispersion determined by array design

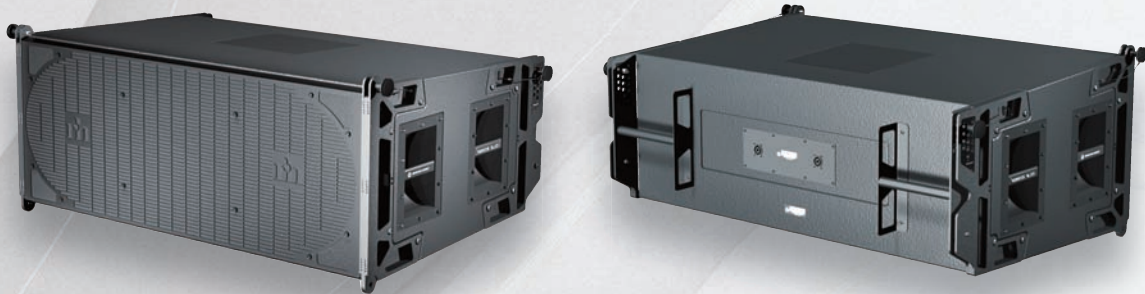
**ENCLOSURE:** Multi-ply hardwood, perforated metal grill

**FINISH OPTIONS:** Black (Standard), white or custom paint; Black TuffTex

**ASSOC. HARDWARE:** RHANGVL3 Flybar; DOLLYVL3 Dolly; COVERVL3 Padded cover (4 units)

**DIMENSIONS H x W x D (Inch / cm):** 17.25" x 38.5" x 26.5" / 43.8 x 97.8 x 67.3

**WEIGHT NET (Lbs / kg):** 175 / 79.37



For more information visit us on our website [www.renkus-heinz.com/versys](http://www.renkus-heinz.com/versys)

