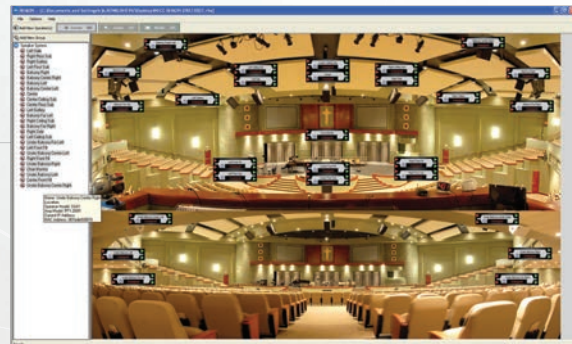


RHAON is the first practical system to combine digital audio distribution with precise control and supervision of self-powered loudspeakers. **RHAON** uses standard Ethernet hardware, advanced CobraNet technology and on-board DSP (Digital Signal Processing) to turn self-powered Renkus-Heinz loudspeakers from "black boxes" into "smart boxes" that can respond to user input in real time.

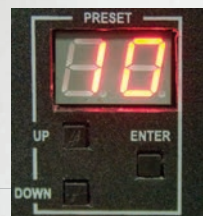
Multi-dimensional **RHAON** technology lets you **CONNECT** multiple loudspeakers with high-performance digital audio, **CONTROL** and **SUPERVISE** the entire system, all over a single Cat 5 cable.

RHAON systems feature several levels of password-protected access control to prevent inadvertent or unauthorized changes of the control settings.

GLOBAL CONTROL, MONITORING & ERROR REPORTING AT A GLANCE



RHAON allows both real-time supervision while the system is in use, and remote supervision with fault logging and operator alerts via e-mail and text messaging.



Multiple presets easy selection



IC-RC1 Remote Control



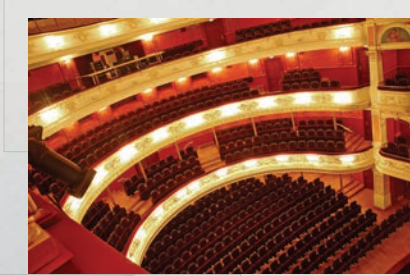
Complex Conic Horn Design - The natural, transparent sound that come to define Renkus-Heinz loudspeakers is a result of our unique Complex Conic Horn technology. Complex Conic horns work with the spherical expansion of the acoustic pressure wave instead of trying to force it through a rectangular funnel like conventional designs. Complex Conic horns provide constant beamwidth, and as pattern control devices, they perform better over a wider frequency band than ordinary horns.



Patented CoEntrant Topology (US Patent # 5,526,456) - In our original CoEntrant designs, the output of multiple mid and high frequency transducers were integrated into a single acoustic source, with inherent alignment in both space and time. In a visionary, yet logical next step, we applied these designs to create an entirely new type of wideband, high output, low distortion, point source transducer. It's no exaggeration to say that the patented CoEntrant Driver is the first truly new approach to converting electrical energy into sound in well over 50 years.



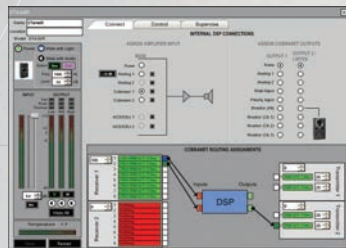
TRAP - TRue Array Principle - (US Patent # 5,750,943) - Ordinary loudspeakers can't help interfering with each other when clustered because their acoustic centers are widely spaced. That is why we designed TRAP horns and enclosures to move all acoustic centers as far to the rear as possible, where they can be closely aligned. Since all sound originates from virtually the same point in space, interference between adjacent horns is largely eliminated. Arrays of TRAP loudspeakers produce a phase aligned wavefront with uniform frequency response across the coverage area. The result is great sound at every seat.



RENKUS-HEINZ AUDIO OPERATIONS NETWORK

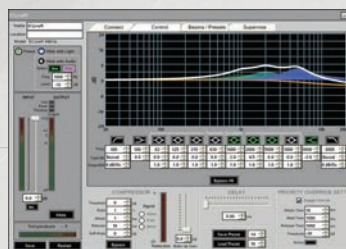
MAXIMUM CONTROL

CONNECT



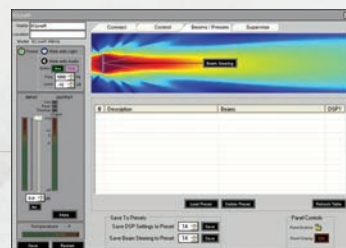
In a **RHAON** system there are both physical connections, made using Cat 5 and/or analog cables as well as AC power cords and network connections that you make within the software.

CONTROL



You can control many DSP parameters in real time, and/or preconfigure them in software, making final adjustments during commissioning or setup. Multiband Parametric Equalizer allows integrator to fully optimize each networked loudspeaker for its particular application and location.

BEAMS / PRESETS



In Iconyx and **IC Live** systems presets can be stored for both Beam and DSP designs. These can be stored to the loudspeaker and easily recalled, either from the back panel or remotely from a Computer, a simple hardware interface or via Creston.

SUPERVISE



RHAON offers real time supervision of all connected **RHAON** Empowered loudspeakers. Many parameters, including temperature and driver impedance are monitored and reported back to the supervising computer. Exceptions can trigger e-mail notifications or simply be entered into a fault log for future analysis.



GIVE YOURSELF THE ADVANTAGE



EASE, EASE JR and EARS are the industry standard modeling programs for acoustic environments and sound system performance. Software suite provides system designers and consultants with an invaluable set of tools for all aspects of professional practice, from detailed, realistic modeling and simulation of venue acoustics and sound system performance to informative and engaging client presentations, to comprehensive measurement and verification.



EASERA is uniquely powerful software architecture, which allows extensive post-processing and comparison of different measurement and analysis methods. **EASERA** consists of four independent modules: Measurement module, Signal generator, Real time analyser and Post processing module. **EASERA** provides both data acquisition with a variety of stimulus signals including Time Delay Spectrometry, a sweep, a MLS or a noise excitation signal, and a post processing engine to calculate all acoustic functions or measures according to ISO Standard 3382 and higher.



SysTune & SysTune Pro, are software based measurement systems purpose-designed for real-time live-sound applications. They measure both time-domain and frequency domain information simultaneously using live program material while an audience is present. Designed for real-time live-sound applications, SysTune is a sophisticated yet exceedingly easy to use measurement system with novel, patent pending features that are especially useful for system tuning and live sound measurements.



www.renkus-heinz.com

2011 © Renkus-Heinz, Inc., 19201 Cook Street, Foothill Ranch, CA 92610 USA • Tel: +1 949 588 9997 • sales@renkus-heinz.com

RH732 May 2011

CF/CFX Series

- Ready To Ship
- Powered & Externally Powered
- Two-way
- Flexible Input Configurations
- Complex Conic Horn Design
- Titanium HF Drivers
- Built-in Crossover
- RH Quality & Versatility



COST EFFECTIVE SOLUTION

CF/CFX101 Modular Point Source Array

- Expands the CF/CFX Series
- Modular Point Source Line Array
- 15 degrees vertical dispersion
- Two-way 1x10" LF and 2x1" HF
- Integral Flying Hardware
- Powered & Externally Powered
- Neodymium Magnets for lighter weight
- Matched 15" Subwoofer
- Compact Powerful Design

NEW



COMPACT & VERSATILE

PN/PNX Series & RPA

- Build to Order
- Powered & Externally Powered
- Two-way
- Reference Quality
- Complex Conic Horn Design
- Portable Options
- Installation Options
- Finish Options
- Rotatable Horns
- Weather Resistant
- Reference Point Arrays



REFERENCE QUALITY AUDIO

ST/STX Series & RPA

- Build to Order
- Powered & Externally Powered
- Three-way
- High Output
- Reference Quality
- CoEntrant Transducers
- Complex Conic Horn Design
- Portable Options
- Installation Options
- Finish Options
- Rotatable Horns
- Weather Resistant
- Reference Point Arrays



ADVANCED AUDIO TECHNOLOGY

ICONYX

DIGITALLY STEERABLE LINE ARRAY LOUDSPEAKER SYSTEMS

While a traditional passive column array can create a relatively controlled beam the whole column must be pointed down onto the desired listening area. This can be both acoustically and aesthetically undesirable.

Tilting a passive column is like tilting a disc or Frisbee of sound, as the beam is tilted down the sides of the beam tilt up onto the side walls increasing reflections. A digitally steerable solution like Iconyx can be mounted flat against a wall or column and the sound is then steered electronically by digital signal processing.

Steering the beam instead of tilting the beam brings the beam down more like an umbrella of sound than a Frisbee with the extremes enveloping the coverage area rather than tilting up to the side walls, very much improving intelligibility.

Architecturally and acoustically transparent Iconyx systems integrate high-performance acoustical components, advanced, audiophile-quality digital electronics and powerful software in practical, modular systems that virtually disappear. Iconyx is the first solution to combine digital steering with exceptional audio fidelity.

IC R

MUSICAL INTELLIGIBLE PRACTICAL

Give Iconyx just six inches of wall space, and it will give everyone within 300 ft over 99 dB of articulate, detailed, naturally balanced full range sound.

Iconyx has proven itself in acoustically challenging environments around the world.

This advanced technology is a powerful new solution for any application that demands:

- articulate, clearly understandable speech
- flexible, precisely controlled coverage
- highly competitive total system cost
- fast, cost-effective installation
- wide-angle sound projection
- natural sounding music
- multiple presets, easy selection



IC8R IC16R IC24R IC32R

IC Live

ENGINEERED FOR LIVE SOUND

- Digital Beam Steering for the highest intelligibility
- Quick and easy set-up with or without a computer
- Slim Design for greater sight-lines
- Time saving and portable with quick pin assembly
- Powerful output to handle live performances



IC²

NEW DIRECTIONS IN LOUDSPEAKER DESIGN

NEW



IC² arrays are powerful and versatile. Their four 8-inch low frequency Neodymium transducers and four 1-inch throat Titanium Nitride coated HF drivers produce surprisingly high sound levels for their size and weight.

They can be used as a stand alone high performance loudspeaker, in small stacks when additional control and output are needed or flown in large multi-cabinet arrays when even more output and control are needed.

IC² arrays are equally at home delivering intelligible speech during corporate stockholder meetings, cutting through the crowd noise at political conventions or shaking the walls with rock music during concerts.