

Using Iconyx DLL Loudspeaker files in EASE

1. You must have the ICONYX DLL Loudspeaker data file installed on your computer. If you do not have it, either:

A. Open EASE and select Database Update from the Help pull down menu and follow the prompts to update your Loudspeaker database

B. Download the RH-IconyxArrays.zip file from www.Renkus-Heinz.com/EASE/Downloads/ and place it in the Renkus-Heinz folder in the EASE40Data/Global Speakers40 directory folder on your C drive if you are running Windows XP. If you are running Vista or Windows 7, you will find the EASE40Data folder under C:/Users/Public/Documents. Extract (unzip) the RH-IconyxArrays DLL file.

Note: You may also want to create a new RH-ICONYX Arrays folder in the RH directory for the DLL file.

2. You must also have RH Beamware 2 or RHAON installed on your computer for the DLL to work properly in EASE. If you do not:

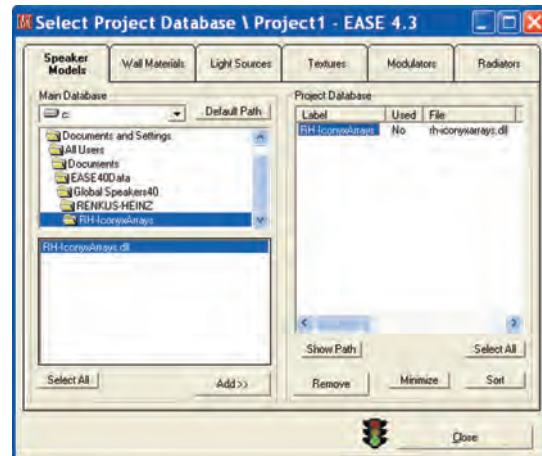
To download Beamware 2, go to [ftp://ftp.renkus-heinz.com/Software/ICONYX/RHBeamware2/](http://ftp.renkus-heinz.com/Software/ICONYX/RHBeamware2/)

To download RHAON, go to [ftp://ftp.renkus-heinz.com/Software/RHAON/Official_Release/](http://ftp.renkus-heinz.com/Software/RHAON/Official_Release/)

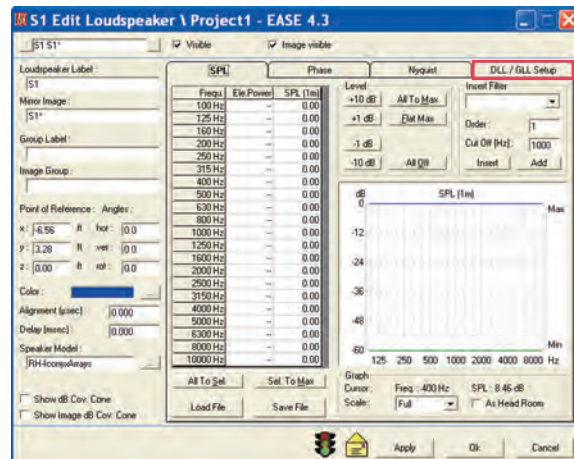
Note: Before inserting the ICONYX DLL into your EASE project, you may want to use the graphic modeling and design capabilities of Beamware 2 or the Beamware section of RHAON to establish the array setup parameters (number of beams, aiming angles, etc.) and save them as a .rhs file that can be imported into EASE. Use Export Setup under the Array pull down menu to create the .rhs file.

Using the ICONYX DLL

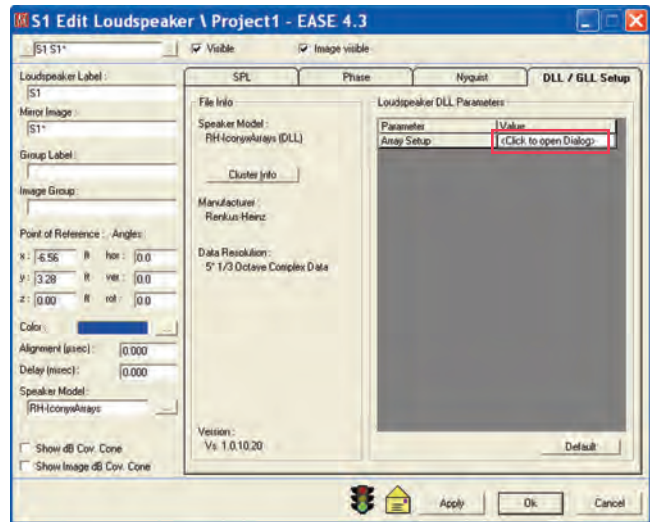
1. While in Edit Project in EASE, Insert a loudspeaker into the model. When the loudspeaker Properties window opens, follow normal procedures to Browse to the Renkus-Heinz folder in the speaker database and select the IconyxArrays DLL.



2. After adding the Iconyx DLL in the Properties window, select DLL / GLL Setup in the Properties window; see graphic to the right.



3. This will open a new version of the Properties window; click on the <...> symbol to open the Iconyx setup window.



4. When the Iconyx Arrays Setup window opens, set the desired parameters manually by inserting/selecting the appropriate information or by importing the parameters from Beamware.

To import the setup parameters, Select Load Setup and browse to the .rhs file you created in Beamware.

OK the setup when it is completed and proceed just as you would with any other loudspeaker.

