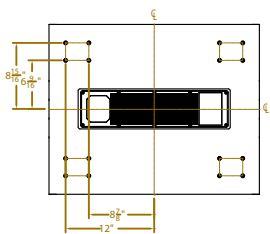
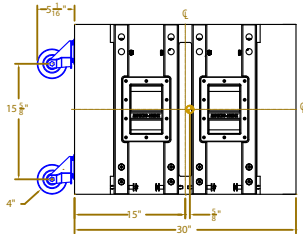


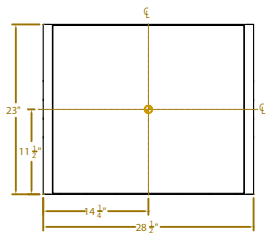
TOP VIEW



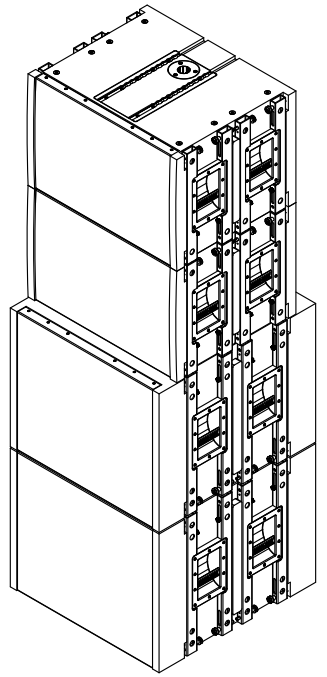
REAR VIEW



SIDE VIEW



FRONT VIEW



ISOMETRIC VIEW  
IC2-R FLOWN

NOTES:

- 1) SUSPENSION POINTS: M10 THREADED SUSPENSION POINTS 4X TOP, 4X BOTTOM
- 2) WEIGHT: 110 LBS.
- 3) CENTER OF GRAVITY
- 4) ATTACHMENT POINTS ARE APPROXIMATE. DESIGN ATTACHMENT PLATES WITH SLOTS FOR ADJUSTABILITY.
- 5) WARNING! PROVIDE 5" OF AIR SPACE AROUND THE BACK SIDE OF THE AMPLIFIER FOR COOLING.
- 6) **METRIC DIMS AVAILABLE BY LAYER CHOICE**

WARNING! HANGING LOUDSPEAKERS IS A SERIOUS UNDERTAKING THAT SHOULD BE DONE ONLY BY QUALIFIED AND EXPERIENCED PERSONNEL. CHECK WITH AN ARCHITECT OR STRUCTURAL ENGINEER TO VERIFY ANY BUILDING ATTACHMENT POINTS. RENKUS-HEINZ IS NOT RESPONSIBLE FOR ANY NON-RENKUS-HEINZ PRODUCTS OR FOR ANY MISUSE OF RENKUS-HEINZ PRODUCTS.

| PART NUMBER LIST |             |      |    |
|------------------|-------------|------|----|
| REV              | DESCRIPTION | DATE | BY |
|                  |             |      |    |
|                  |             |      |    |
|                  |             |      |    |
|                  |             |      |    |

|                                                                                                             |         |                      |                                      |                  |            |
|-------------------------------------------------------------------------------------------------------------|---------|----------------------|--------------------------------------|------------------|------------|
| UNLESS OTHERWISE SPECIFIED DIMENSIONS ARE IN INCHES<br>TOLERANCES ARE:<br>DECIMALS ANGLES<br>XX<br>XXX±.005 | INTL    | DATE                 |                                      | TITLE            |            |
|                                                                                                             | DRAWN   | D.P.                 |                                      |                  | 04/02/2013 |
|                                                                                                             | CHECK   |                      |                                      |                  |            |
|                                                                                                             | DESIGN  |                      |                                      |                  |            |
|                                                                                                             | ENG     |                      |                                      |                  |            |
| APPROV                                                                                                      |         |                      | <b>REFERENCE DRAWING</b><br>IC1185-R |                  |            |
| APPROV                                                                                                      |         |                      |                                      |                  |            |
|                                                                                                             |         |                      |                                      |                  |            |
|                                                                                                             |         |                      |                                      |                  |            |
|                                                                                                             |         |                      |                                      |                  |            |
|                                                                                                             |         |                      | REF DWG:                             |                  |            |
|                                                                                                             |         |                      | IC1185-R                             |                  |            |
|                                                                                                             |         |                      | IC1185-R-A.DWG                       |                  |            |
| NEXT ASSY                                                                                                   | USED ON | DO NOT SCALE DRAWING | SCALE: 1 = 1                         | CODE IDENT       |            |
|                                                                                                             |         |                      |                                      | DWG NO.          |            |
|                                                                                                             |         |                      |                                      | IC1185-R         |            |
|                                                                                                             |         |                      |                                      | REV              |            |
|                                                                                                             |         |                      |                                      | A                |            |
|                                                                                                             |         |                      |                                      | WEIGHT: 211 Lbs. |            |
|                                                                                                             |         |                      |                                      | SHEET 1 OF 1     |            |

THE MATERIAL CONTAINED HEREIN IS PROPRIETARY TO RENKUS-HEINZ AND SHALL NOT BE REPRODUCED, DISCLOSED OR USED FOR ANY OTHER PURPOSE WITHOUT THE WRITTEN APPROVAL OF RENKUS-HEINZ.

