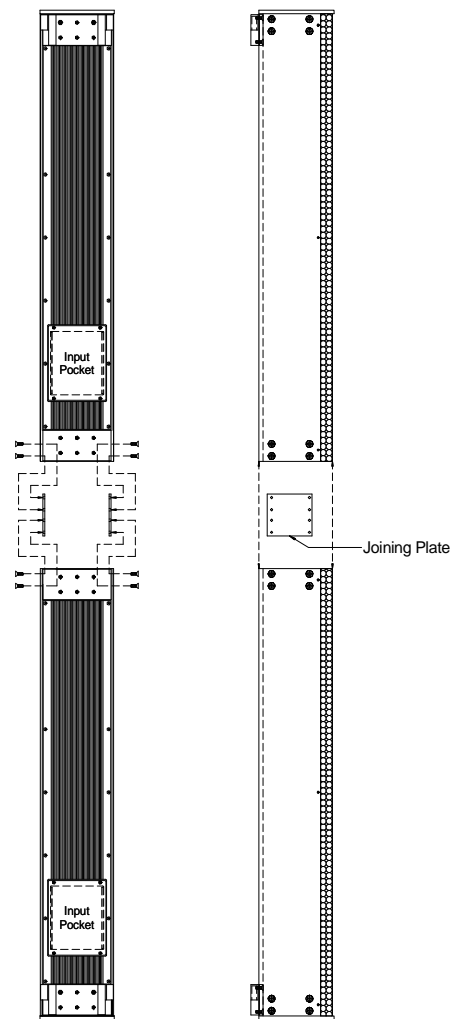
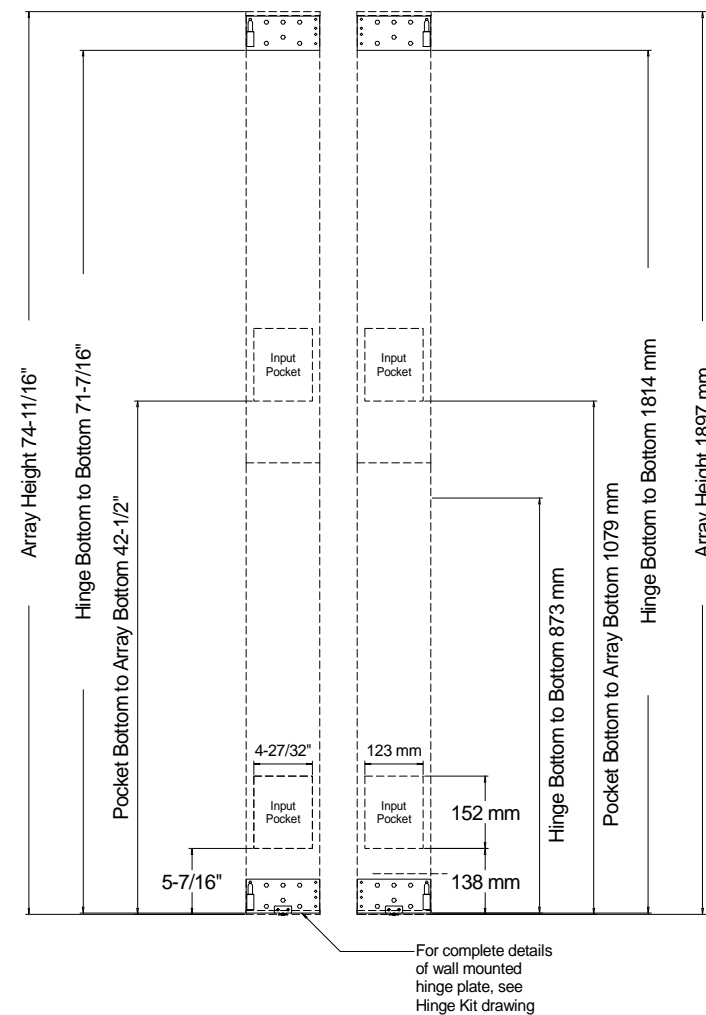


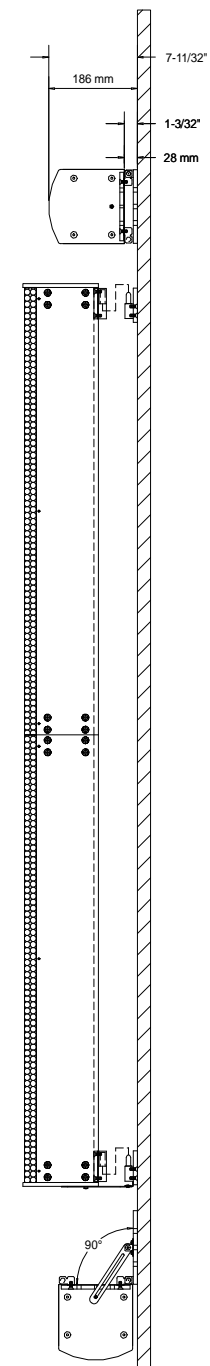
IC16R-II Array



IC16R-II Assembly



IC16R-II Install Dimensions



WARNING! Hanging loudspeakers is a serious undertaking that should be done only by qualified and experienced personnel. Check with an architect or structural engineer to verify any building attachment points. Renkus-Heinz is not responsible for any non-Renkus-Heinz products or for any misuse of Renkus-Heinz products.

PART NUMBER LIST

REV	DESCRIPTION	DATE	BY

UNLESS OTHERWISE SPECIFIED DIMENSIONS ARE IN INCHES TOLERANCES ARE:	INTL JM	DATE 10-2011	<b>RENKUS-HEINZ, inc.</b> TITLE: <b>IC16R-II ASSEMBLY</b>
DECIMALS .XX±.01	CHECK		
ANGLES ±0° 30'	DESIGN		
.XXX±.005	ENG		
	APPROV		
	APPROV		
	REF DWG		
NEXT ASSY.	USED ON	DO NOT SCALE DRAWING	SIZE CODE IDENT DWG NO. REV
APPLICATION	DEBURR AND REMOVE SHARP EDGES	SCALE	WEIGHT SHEET 1 OF 1

THE MATERIAL CONTAINED HEREIN IS PROPRIETARY TO RENKUS-HEINZ AND SHALL NOT BE REPRODUCED, DISCLOSED OR USED FOR ANY OTHER PURPOSE WITHOUT THE WRITTEN APPROVAL OF RENKUS-HEINZ.