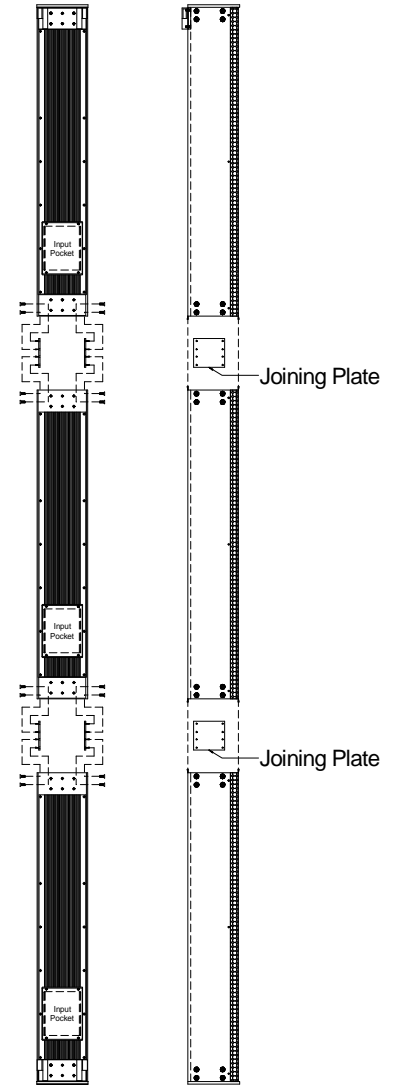
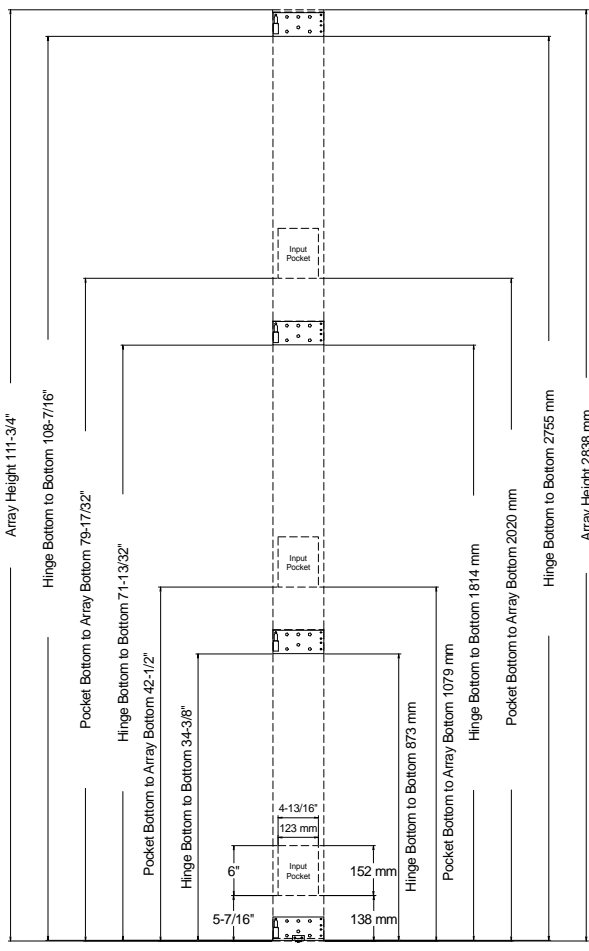


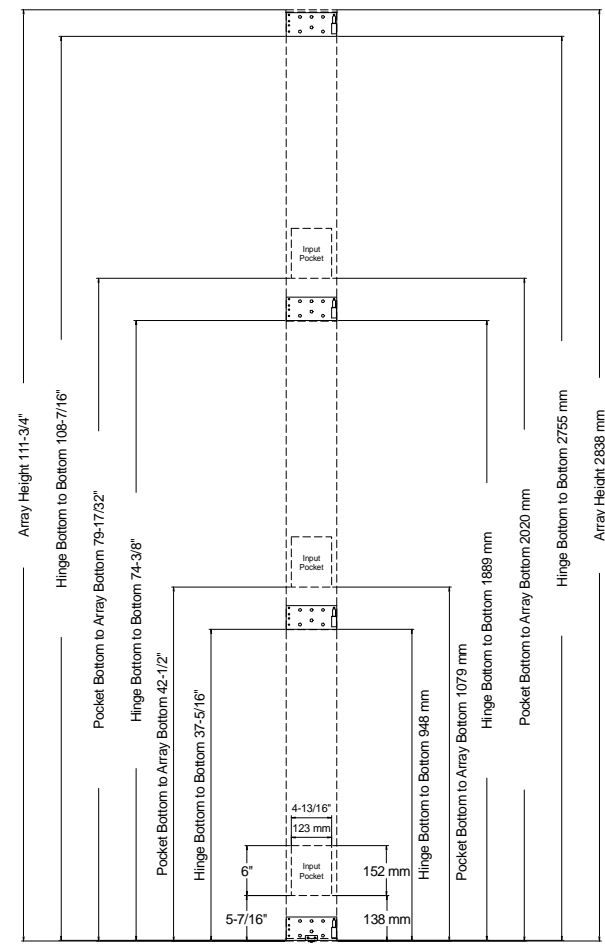
IC24R-II Array



IC24R-II Assembly



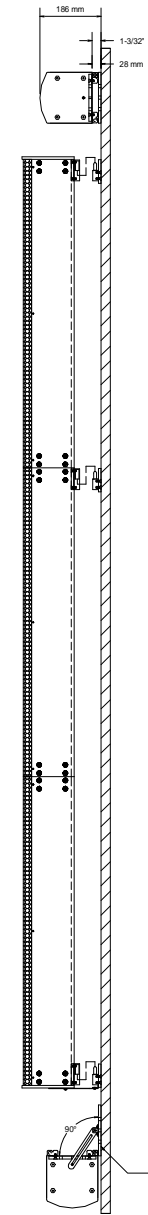
Middle hinges at lower points



Middle hinges at upper points

Use any three of the above hinge locations.

IC24R-II Install Dimensions



WARNING! Hanging loudspeakers is a serious undertaking that should be done only by qualified and experienced personnel. Check with an architect or structural engineer to verify any building attachment points. Renkus-Heinz is not responsible for any non-Renkus-Heinz products or for any misuse of Renkus-Heinz products.

PART NUMBER LIST			
REV	DESCRIPTION	DATE	BY

UNLESS OTHERWISE SPECIFIED DIMENSIONS ARE IN INCHES TOLERANCES ARE:	INTL DRAWN CHECK DESIGN ENG APPROV APPROV REF DWG	DATE JM 10-2011	 RENKUS-HEINZ, inc. TITLE: IC24R-II ASSEMBLY
DECIMALS .XX±.01 ANGLES ±0° 30' .XXX±.005			
NEXT ASSY.	USED ON	DO NOT SCALE DRAWING	SIZE CODE IDENT DWG NO. REV
APPLICATION	DEBURR AND REMOVE SHARP EDGES	SCALE	WEIGHT SHEET 1 OF 1

THE MATERIAL CONTAINED HEREIN IS PROPRIETARY TO RENKUS-HEINZ AND SHALL NOT BE REPRODUCED, DISCLOSED OR USED FOR ANY OTHER PURPOSE WITHOUT THE WRITTEN APPROVAL OF RENKUS-HEINZ.