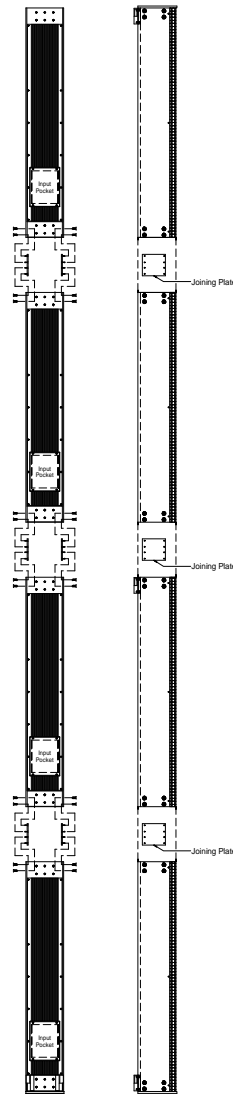
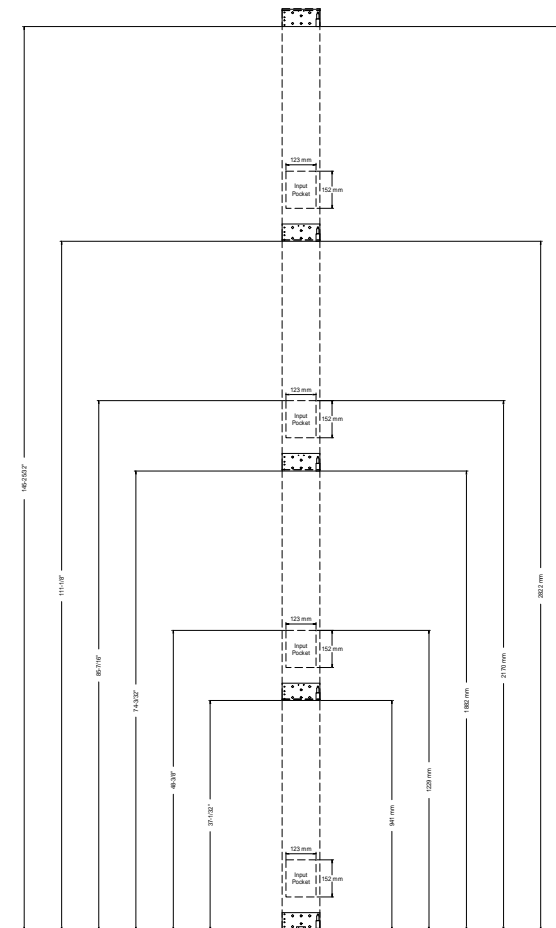
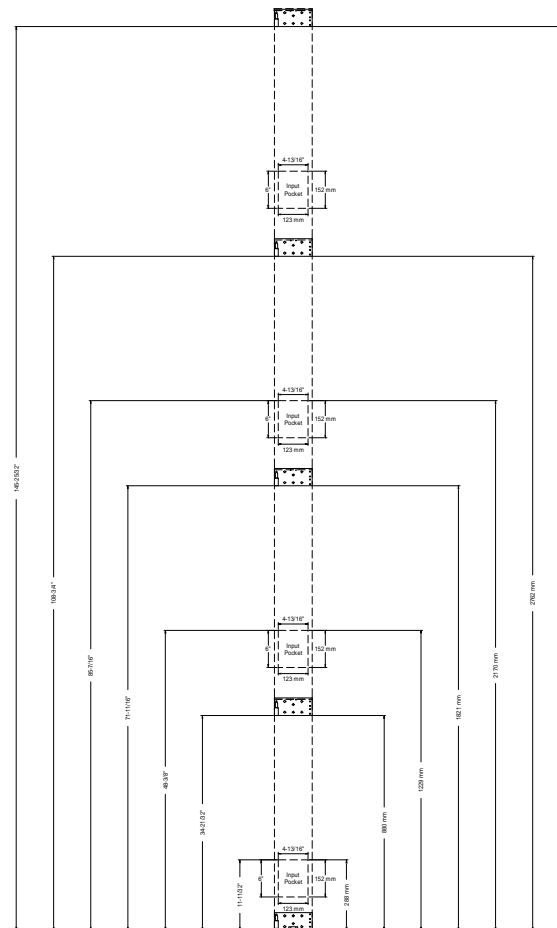


IC32R-II Array

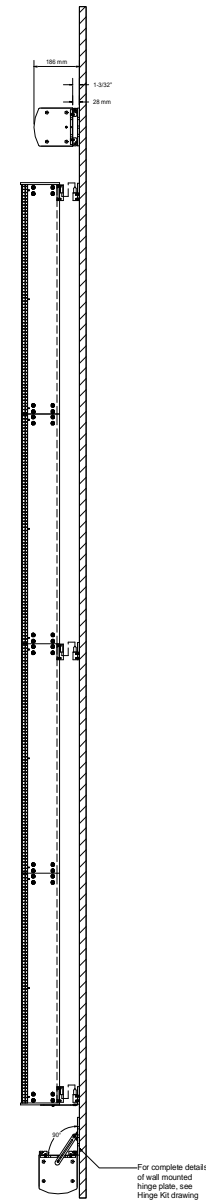


IC32R-II Assembly



Use any three of the above hinge locations.

IC32R-II Install Dimensions



PART NUMBER LIST

REV	DESCRIPTION	DATE	BY

UNLESS OTHERWISE SPECIFIED DIMENSIONS ARE IN INCHES TOLERANCES ARE:	INTL	DATE	RENKUS-HEINZ, inc. TITLE: IC32R-II ASSEMBLY
DECIMALS .XX±.01	DRAWN JM	10-2011	
ANGLES ±0° 30"	CHECK		
.XXX±.005	DESIGN		
	ENG		
	APPRDV		
	APPRDV		
	REF DWG:		
NEXT ASSY:	USED ON:	DO NOT SCALE DRAWING	SIZE CODE IDENT DWG NO. REV
APPLICATION:	DEBURR AND REMOVE SHARP EDGES	SCALE	WEIGHT SHEET 1 OF 1

THE MATERIAL CONTAINED HEREIN IS PROPRIETARY TO RENKUS-HEINZ AND SHALL NOT BE REPRODUCED, DISCLOSED OR USED FOR ANY OTHER PURPOSE WITHOUT THE WRITTEN APPROVAL OF RENKUS-HEINZ.