



RENKUS-HEINZ

RHAON II System Manager Software

These Release Notes augment or replace sections of the RHAON II Version 2.0.0 User Manual.
December 22, 2016

Version 2.0.1 Release Notes

Features

- It is no longer necessary to switch the computer's NIC from Fixed to Dynamic IP. Either setting will work.
- The 2.0.1 installer includes Microsoft redistributable code that may be missing from some Windows 10 systems. This release adds support for Windows 10.
- Support added for non-steerable CobraNet devices. VARIAi, CF Series, PN Series and ST Series are now supported.
- Updated EASE data compatibility for Iconyx hybrid arrays (IC16-8-RN, IC24-16-RN, IC32-24-RN).

Maintenance Items

- Various device discovery and connectivity issues have been resolved. Devices should now always correctly appear in Network Discovery. Note that CobraNet devices require RHAON II compatible firmware. CobraNet devices that are compatible with RHAON II will ship with the correct firmware.
- Adding a virtual device from Devices to a Group now correctly moves that device along with its settings.
- Unsupported Array Groups cannot be accidentally created.
- Extraneous devices have been removed from the list of Virtual Devices.
- Various EQ operational issues have been resolved.
- Issues with Device naming and preset behaviors in Array Groups have been resolved.
- Problems with the Device serial number display in Network Discovery have been resolved.
- An issue where shortcut keys wouldn't work after typing in a gain or delay value has been fixed.
- Opening a project by double clicking the project file has been made more reliable.
- Occasional instances of RHAON II processes still running after exiting have been resolved.

Release Notes
RHAON II Version 2.1.0
Firmware 1.00.17 for Iconyx Gen5 Master (RN) and Slave (RS)

Features

- Support added for new Iconyx and IC Live “RD” versions, with Dante connectivity.
- The “System Busy” message at startup stays on longer while all connected devices are scanned. During this time, the Device buttons in Network Discovery will flash.
- The DSP Version is now displayed under Device Info for Gen5 units.
- DSP settings can now be copy/pasted between different variations of the same model loudspeaker.
- Multiple Zone support has been added for management of very large systems.
- A new Icon Device View has been added for management of very large systems.
- An Project Report can now be exported that contains all Device settings in the project.
- RD Dante versions of Iconyx and IC Live can access up to 340ms of delay via RHAON II.
- RD Dante versions of Iconyx and IC Live have Priority Input switching, similar to that available on previous CobraNet loudspeakers from Renkus-Heinz. Refer to the Source Select and Priority Input sections of the RHAON II manual for operating instructions.
- A Gen5 Slave module (RS) with Firmware 1.00.17 can be used with either a Gen5 RN Master module running 1.00.17 or a Gen5 RD Dante Master module running 1.00.37.

Maintenance Items

- Opening of pre-existing projects has been made more robust.
- Connection issues with systems having many Devices have been resolved.
- Connectivity with Renkus-Heinz CobraNet devices has been improved.
- Virtual Device errors with non-English versions of Windows have been resolved.

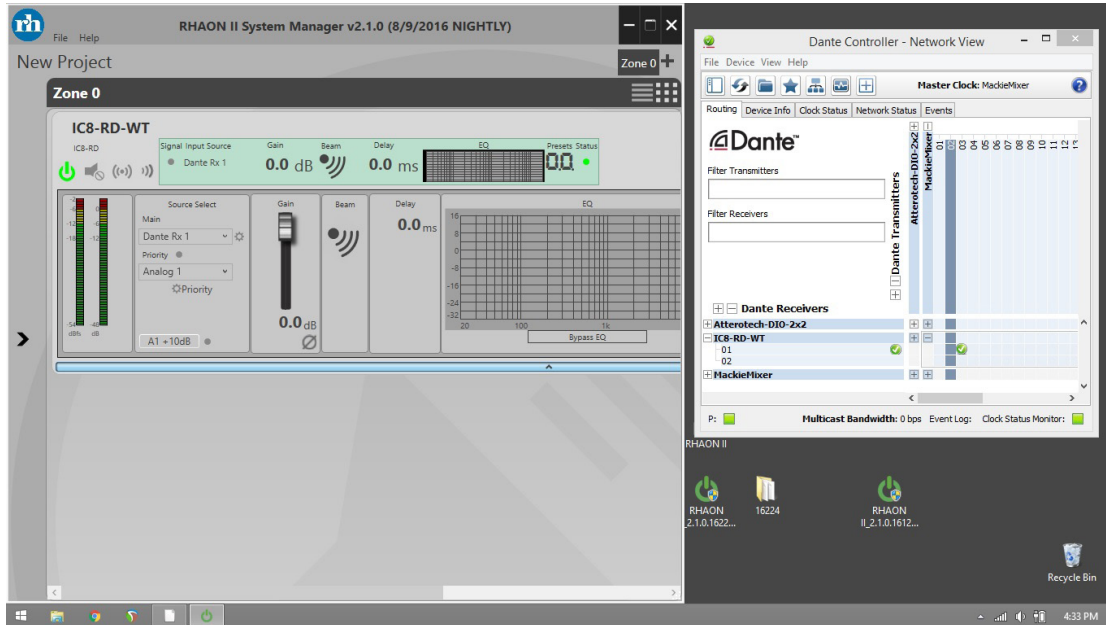
Notes

- When experiencing connectivity issues with Renkus-Heinz CobraNet devices: With the default Windows firewall, go to Control Panel > Windows Firewall > Allow an app or feature through the firewall. Find RHAON II and add the different network types. With a third party firewall, unblock “TFTP” on port 69 in both UDP and TCP.
- When moving individual Devices in and out of Array Groups, the Preset data displayed in Preset Manager may get out of sync with the data in the Devices’ working memory. This may lead to accidentally overwriting a preset. To avoid this, put Array Group Presets and individual Device Presets in separate Preset locations.
- In previous versions of RHAON II a Device’s microcontroller version display would appear red in the even of a version mismatch between Master and Slave units. To accommodate RD Master and RN Master compatibility with any RS Slave, this feature has been removed.

Using RD Dante units with RHAON II 2.1.0

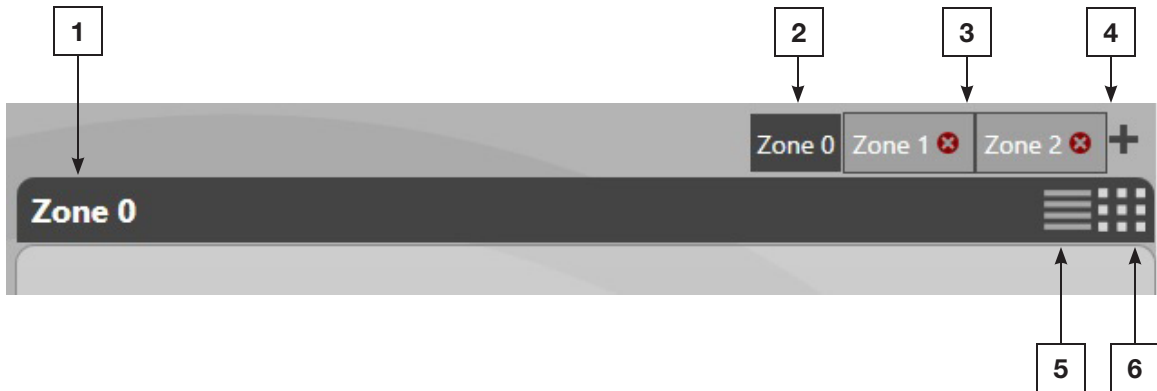
- RD units will appear in Network Discovery, like RN units, and have all the same controls.
- Dante Rx 1 and Dante Rx 2 are choices under Source Select. They correspond to Channels 01 and 02 of the RD unit that appear in Dante Controller.
- The RD unit's device name in Dante Controller will match the name that appears in RHAON II's Network Discovery. The name must be changed in RHAON II and that change will be reflected in Dante Controller. If the name is changed in Dante Controller, RHAON II will have to be closed and restarted for the name to update.
- Recommended Workflow:
 - See all the connected units in RHAON II's Network Discovery.
 - Wink them and name them in RHAON II's Network Discovery. The new names will appear in Dante Controller under Dante Receivers.
 - Select Dante Rx 1 or Rx 2 under Source Select in RHAON II.
 - Route from the desired Dante Transmitter to the RD units' Dante Receiver channels in Dante Controller that corresponds to the selection of Rx 1 or Rx 2 in RHAON II.

The image below shows Mackie Mixer Transmitter 03 routed to IC8-RD-WT Receiver Rx 1.



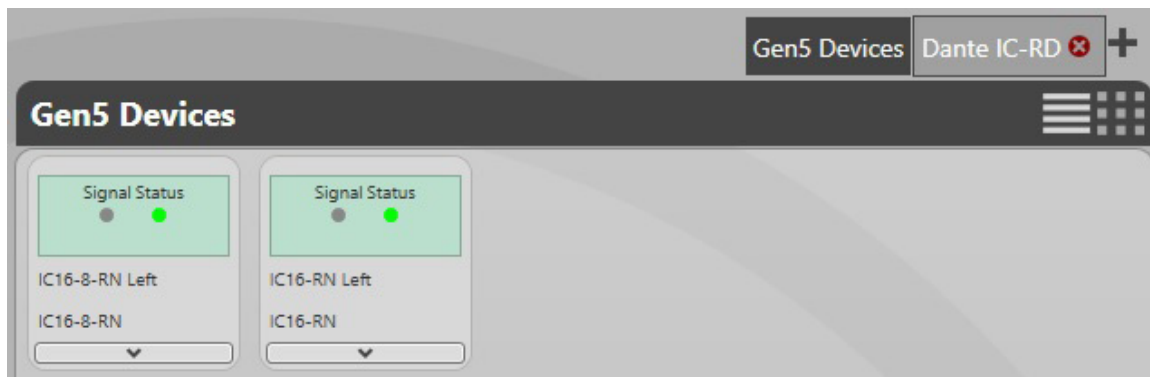
Multiple Zones and Device Icon View

To facilitate control of very large systems, spread across multiple physical locations, RHAON II supports multiple Zones. Each Zone can be switched between the standard Rack View and Icon View, with individual Devices able to be shown in Expanded View from Icon View.



1. Active Zone name. Click here to edit the name.
2. Active Zone selection button – Zone 0 selected.
3. Active Zone selection buttons – Zones 1 & 2 not selected. Red X to delete a Zone.
4. Add Zone
5. Display Devices in Active Zone in Rack View
6. Display Devices in Active Zone in Icon View

Clicking the down arrow button on a Device will open it into Expanded View while maintaining the rest in Icon View. When in Device Icon View, only one Device at a time can be opened in Expanded View to maintain the overview nature of Icon View.



Version 2.1.1 Release Notes

Maintenance Items

- Previously it was possible to enter a Device name with spaces for a Dante RD device. This is invalid as a Dante device name. Dante devices will not accept a space as part of the device name.
- Speed of switching between populated Zones has been improved.
- In some cases, the input selection pulldown for CobraNet devices would appear empty. This has been addressed.
- Previously, Dante devices would not show as offline when disconnected or powered off. This has been corrected.
- The Source Select pulldown did not appear for some CobraNet devices in RHAON II 2.1.0. This has been corrected.