

### VARIAi Modular Installation Array Technology

VARIAi's fully modular design enables cabinets to be easily configured as flown Modular Point Source Arrays, powerful Line Arrays, or low profile horizontal arrays. With a range of vertical and horizontal dispersion angles and Renkus-Heinz's unique Transitional WaveGuides, VARIAi's highly configurable enclosures make it easy to custom design a system for every application.

VARIAi VA101i (self-powered) and VAX101i (externally powered) cabinets are available in 7.5°, 15° and 22.5° arrayable enclosures. Each enclosure is available with one of five different waveguides including 60°, 90°, and 120° patterns, as well as proprietary Progressive WaveGuides that can transition from 60° to 90° or 90° to 120° seamlessly within each cabinet. Matching VA/VAX15Si 15-inch subwoofers can be flown alongside, behind, or at the top of the array, in standard or cardioid pattern. The result is a system that can be uniquely configured to deliver coverage for the most challenging spaces.

#### Applications

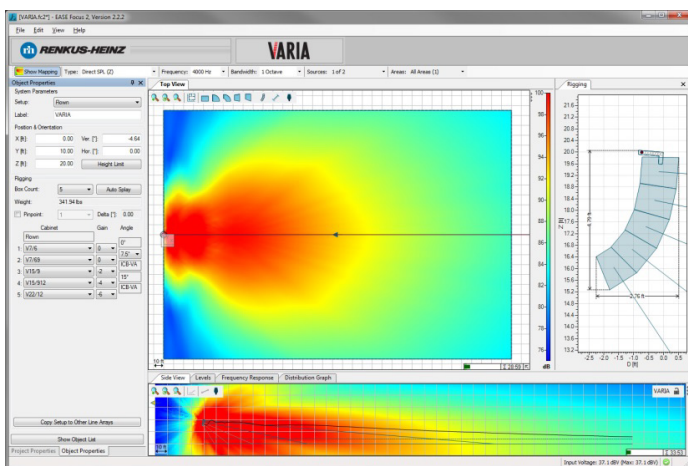
- Live Music, Theater, Performing Arts
- Auditoriums and Lecture Theaters
- Multi-purpose spaces
- Sporting facilities
- Reverberant spaces
- Weather resistant outdoor applications

## VERSATILE POWERFUL MUSICAL

### EASE Focus II Simulation Software

VARIA101i DLL data in EASE and EASE Focus II simulation software tools allows users and system designers to quickly and accurately predict the response of the array.

Simply define the audience areas and you can easily position the array, add or remove cabinets, and adjust its height, location and angle until you achieve the desired results in the simulation.



## Modular Installation Array Systems

# VARIAi

### VAX101i-15 Externally-Powered 15° Array Modules



- **Adaptive Directivity**  
Precisely tailor the coverage pattern to match the room
- **3 Vertical Coverage Angles Available**
  - VAX101i-7 7.5° Vertical Array Module
  - VAX101i-15 15° Vertical Array Module**
  - VAX101i-22 22.5° Vertical Array Module
- **5 Horizontal Coverage Angles Available**
  - Standard Waveguides 60° • 90° • 120° • 60°
  - Transitional Waveguides 60° to 90° • 90° to 120°
- **Dual Mode Operation**  
Modular Point Source Array  
Flexible Line Array
- **Dual 1" HF Drivers and High Power 10" Woofer**  
138dB Peak SPL
- **Concealed Flying Hardware**  
Internal flying hardware allows arrays of up to 12 cabinets deep
- **3/4" (19mm) High Density Polymer Construction**
- **Weather Resistant and Custom Paint Options**
- **EASE \ EASE Focus II GLL Simulation**  
Quick and accurate prediction tools

## VAX101-15 Technical Specifications

<b>Sensitivity:</b>	LF 99dB (1W/1m)	
	HF 112dB (1W/1m)	
<b>Frequency Response:</b>	80Hz to 18kHz (+/- 3dB)	
<b>Max SPL:</b>	LF 134dB peak @ 1 meter	
	LF 140dB peak @ 1 meter (4 cabinets)	
	HF 137dB peak @ 1 meter	
<b>Power Rating:</b>	LF 250W AES @ 8 ohms, recommended amplifier power 625W @ 8 ohms	
	HF 100W AES @ 16 ohms, recommended amplifier power 250W @ 16 ohms	
<b>Vertical Coverage:</b>	15° (7.5° and 22.5° variants available)	
<b>Horizontal Coverage:</b>	VAX101i-15/6	60°
	VAX101i-15/9	90°
	VAX101i-15/12	120°
	VAX101i-15/69	60° to 90°
	VAX101i-15/912	90° to 120°
<b>Transducers:</b>	LF 10" Woofer SSL10-7	
	HF 2x 1" exit, 1.75" VC, Compression Drivers SSD1750-TN-8	
<b>Crossover:</b>	No Internal Crossover, requires bi-amplification (Passive X-Over Option available) Refer to User Guide for DSP settings	
<b>Connectors:</b>	2x NL4 Speakon (looping) LF 1+/- HF 2+/-, Barrier Strip	
<b>Finish:</b>	Black or White Paint as standard, Custom Color Paint available as cost option	
<b>Dimensions:</b>	W 24 3/8" X H 12 15/16" X D 15"	
	W 618.5 mm x H 328.7 mm x D 381.0 mm	
<b>Weight:</b>	72 lbs (32.7 kg) Net without MPS rigging connector	
	76 lbs (34.5 kg) Net with MPS rigging connector	

