

VARIA Modular Installation Array Technology

VARIA's fully modular design enables cabinets to be easily configured as flown Modular Point Source Arrays, powerful Line Arrays, or low profile horizontal arrays. With a range of vertical and horizontal dispersion angles and Renkus-Heinz's unique transitional waveguides, VARIA's highly configurable enclosures make it easy to custom design a system for every application.

VARIA VA101 (self-powered) and VAX101 (externally powered) cabinets are available in 7.5°, 15° and 22.5° arrayable enclosures. Each enclosure is available with one of five different waveguides including 60°, 90°, and 120° patterns, as well as proprietary progressive waveguides that can transition from 60° to 90° or 90° to 120° seamlessly within each cabinet. Matching VA/VAX15S 15-inch subwoofers can be flown alongside, behind, or at the top of the array, in standard or cardioid pattern. The result is a system that can be uniquely configured to deliver coverage for the most challenging spaces.

Applications

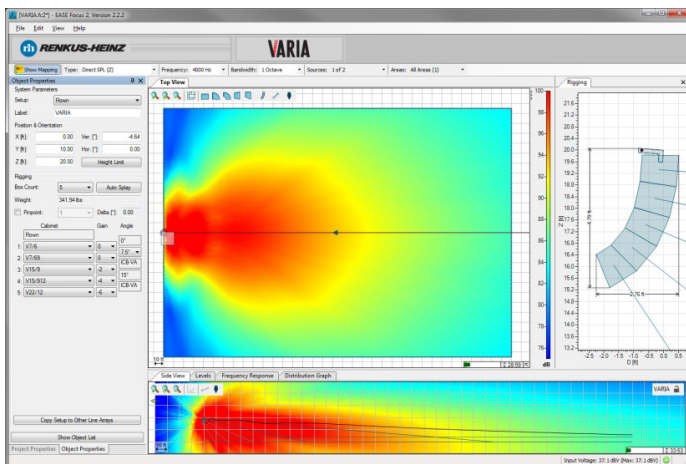
- Live Music, Theater, Performing Arts
- Auditoriums and Lecture Theaters
- Multi-purpose spaces
- Sporting facilities
- Reverberant spaces
- Weather resistant outdoor applications

VERSATILE POWERFUL MUSICAL

EASE Focus II Simulation Software

VARIA101 DLL data in EASE and EASE Focus II simulation software tools allows users and system designers to quickly and accurately predict the response of the array.

Simply define the audience areas and you can easily position the array, add or remove cabinets, and adjust its height, location and angle until you achieve the desired results in the simulation.



© 2014 Renkus-Heinz Inc. reserves the right to change any product specification without prior notification.

Modular Installation Array Systems

VARIAⁱ

VAX101i-7 Externally-Powered 7.5° Array Modules



• Adaptive Directivity

Precisely tailor the coverage pattern to match the room.

• 3 Vertical Coverage Angles Available

VAX101i-7	7.5° Vertical Array Module
VAX101i-15	15° Vertical Array Module
VAX101i-22	22.5° Vertical Array Module

• 5 Horizontal Coverage Angles Available

Standard Waveguides 60° • 90° • 120° • 60°
Transitional Waveguides 60° to 90° • 90° to 120°

• Dual Mode Operation

Modular Point Source Array
Flexible Line Array

• Dual 1" HF Drivers and High Power 10" Woofer

138dB Peak SPL

• Concealed Flying Hardware

Internal flying hardware allows arrays of up to 12 cabinets deep

• 3/4" (19mm) High Density Polymer Construction

• Weather Resistant and Custom Paint Options

• EASE \ EASE Focus II GLL Simulation

Quick and accurate prediction tools

VAX101-7 Technical Specifications

Sensitivity:	LF 99dB (1W/1m)	
	HF 113dB (1W/1m)	
Frequency Response:	80Hz to 18kHz (+/- 3dB)	
Max SPL:	LF 134dB peak @ 1 meter	
	LF 140dB peak @ 1 meter (4 cabinets)	
	HF 138dB peak @ 1 meter	
Power Rating:	LF 250W AES @ 8 ohms, recommended amplifier power 625W @ 8 ohms	
	HF 100W AES @ 16 ohms, recommended amplifier power 250W @ 16 ohms	
Vertical Coverage:	7.5° (15° and 22.5° variants available)	
Horizontal Coverage:	VAX101-7/6	60°
	VAX101-7/9	90°
	VAX101-7/12	120°
	VAX101-7/69	60° to 90°
	VAX101-7/912	90° to 120°
	Transducers:	HF 2x 1" exit, 1.75" VC, Compression Drivers SSD1750-TN-8
	LF 10" Woofer SSL10-7	
Crossover:	No Internal Crossover, requires bi-amplification (Passive X-Over Option available)	
	Refer to User Guide for DSP settings	
Connectors:	2x NL4 Speakon (looping) LF 1+/- HF 2+/-, Barrier Strip	
Finish:	Black or White Paint as standard, Custom Color Paint available as cost option	
Dimensions:	W 24 3/8" X H 12 15/16" X D 14 7/8"	
	W 618.5mm x H 328.7mm x D 378.3mm	
Weight:	73lbs (33.1kg) without MPS rigging connector	
	77lbs (34.9kg) with MPS rigging connector	

